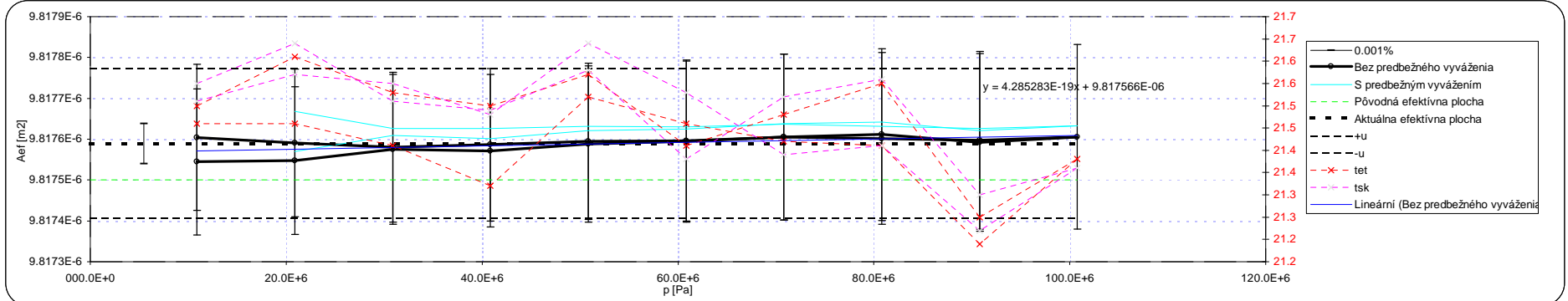


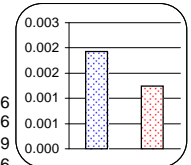
DÁT. PREVZ. ČÍS 18.11.11 PRÍSTROJ TYP VÝROBCA S/N prístroj S/N mier S/N záva FIRMA ULICA MESTO PSČ EMAIL KONTAKT POZNÁMKA PREVZAL (SM ODOVDZDAL (ETALÓN C04

Validácia	[ppm]	Aef	alfa	lambda	u	t _{ref} [°C]	g _{smu/oref}	h _{liq} -h _{ref} liq	h _{gas} -h _{ref} gas	Aef	Aef-pred	Aef _{sk} /Aef _{et}	Aef-Aefmen					
Aef - Aefval =	0.04	[m ²]	[na °C]	[na Pa]		20	9.80873	[m]	[m]	9.81759E-6	9.81763E-6	1.000005						
C04	344/220/17/08	9.817541E-6	10.0E-6	1.20E-12	1.80E-05		9.80665	-0.0050	0.000	9.81759E-6	2.1E-6	1.88E-6	0.0009%					
PC01CC02	189/220/17/07	9.817500E-6	10.0E-6	1.40E-12	1.80E-05					1.9E-6								
zavkonv _{et}	zavkonv _{kl}	dov _{et}	dov _{kl}	t _{et}	t _{kl}	p _r _{et}	p _r _{kl}	p _{dif} (et=H)	m _{et}	m _{kl}	p _h orefakt	p _{et}	p _{kl}	A _{kl}	A _{kl} ored.	Aef _{sk} /Aef _{et}	U _{kl}	
[kg]	[kg]	[g]	[g]	°C	°C	[Pa]	[Pa]	[Pa]	[kg]	[kg]	[Pa]	[Pa]	[Pa]	[m ²]	[m ²]		[m ²]	
10.89551	10.899154	3.563		21.50	21.55				10.89908	10.89915	-45.2	10.8874E+6	10.8875E+6	9.8175E-6		1.000000	178.9E-12	
20.89545	20.899223	3.618		21.61	21.64				20.89907	20.89922	-45.5	20.8763E+6	20.8765E+6	9.8175E-6	9.8176E-6	1.000001	180.6E-12	
30.89547	30.899316	3.507		21.53	21.51				30.89898	30.89932	-45.8	30.8650E+6	30.8653E+6	9.8176E-6	9.8176E-6	1.000003	183.3E-12	
40.89555	40.899338	3.280		21.50	21.49				40.89883	40.89934	-46.1	40.8534E+6	40.8537E+6	9.8176E-6	9.8176E-6	1.000003	187.0E-12	
50.89561	50.899423	3.000		21.57	21.58				50.89861	50.89942	-46.4	50.8414E+6	50.8419E+6	9.8176E-6	9.8176E-6	1.000005	191.5E-12	
60.89567	60.899500	2.725		21.41	21.38				60.89840	60.89950	-46.7	60.8293E+6	60.8300E+6	9.8176E-6	9.8176E-6	1.000005	196.9E-12	
70.89565	70.899542	2.350		21.48	21.52				70.89800	70.89954	-47.0	70.8167E+6	70.8175E+6	9.8176E-6	9.8176E-6	1.000007	203.2E-12	
80.89561	80.899599	2.048		21.55	21.56				80.89766	80.89960	-47.2	80.8039E+6	80.8048E+6	9.8176E-6	9.8176E-6	1.000007	210.1E-12	
90.89566	90.899627	1.750		21.25	21.30				90.89741	90.89963	-47.5	90.7912E+6	90.7921E+6	9.8176E-6	9.8176E-6	1.000005	217.6E-12	
100.89556	100.899695	1.410		21.38	21.36				100.89697	100.89970	-47.8	100.7777E+6	100.7789E+6	9.8176E-6	9.8176E-6	1.000007	225.8E-12	
90.89566	90.899627	1.720		21.19	21.22				90.89738	90.89963	-47.5	90.7912E+6	90.7922E+6	9.8176E-6	9.8176E-6	1.000006	217.6E-12	
80.89561	80.899599	2.135		21.41	21.41				80.89774	80.89960	-47.2	80.8041E+6	80.8049E+6	9.8176E-6	9.8176E-6	1.000006	210.1E-12	
70.89565	70.899542	2.400		21.42	21.39				70.89805	70.89954	-47.0	70.8168E+6	70.8176E+6	9.8176E-6	9.8176E-6	1.000007	203.2E-12	
60.89567	60.899500	2.650		21.46	21.53				60.89832	60.89950	-46.7	60.8292E+6	60.8299E+6	9.8176E-6	9.8176E-6	1.000006	196.9E-12	
50.89561	50.899423	2.910		21.52	21.64				50.89852	50.89942	-46.4	50.8413E+6	50.8419E+6	9.8176E-6	9.8176E-6	1.000005	191.5E-12	
40.89555	40.899338	3.150		21.32	21.48				40.89870	40.89934	-46.1	40.8533E+6	40.8537E+6	9.8176E-6	9.8176E-6	1.000005	187.0E-12	
30.89547	30.899316	3.440		21.41	21.55				30.89891	30.89932	-45.8	30.8650E+6	30.8653E+6	9.8176E-6	9.8176E-6	1.000004	183.3E-12	
20.89545	20.899223	3.510		21.46	21.57				20.89896	20.89922	-45.5	20.8763E+6	20.8765E+6	9.8176E-6	9.8177E-6	1.000005	180.6E-12	
10.89551	10.899154	3.497		21.46	21.51				10.89901	10.89915	-45.2	10.8873E+6	10.8875E+6	9.8176E-6		1.000006	178.9E-12	
0.00000	0.000000								0.00000	0.00000	-44.8							
0.00000	0.000000								0.00000	0.00000	-44.8							
0.00000	0.000000								0.00000	0.00000	-44.8							
0.00000	0.000000								0.00000	0.00000	-44.8							
0.00000	0.000000								0.00000	0.00000	-44.8							
0.00000	0.000000								0.00000	0.00000	-44.8							
0.00000	0.000000								0.00000	0.00000	-44.8							
0.00000	0.000000								0.00000	0.00000	-44.8							
0.00000	0.000000								0.00000	0.00000	-44.8							
0.00000	0.000000								0.00000	0.00000	-44.8							
0.00000	0.000000								0.00000	0.00000	-44.8							
0.00000	0.000000								0.00000	0.00000	-44.8							
0.00000	0.000000								0.00000	0.00000	-44.8							
0.00000	0.000000								0.00000	0.00000	-44.8							
0.00000	0.000000								0.00000	0.00000	-44.8							

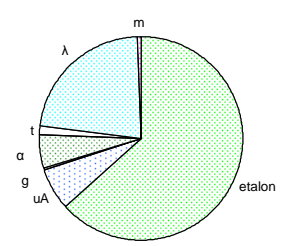


Bilancia neistôt
 $\rho = m \cdot (1 - \text{rozm}/\text{rozav}) \cdot g / (A \cdot (1 + \alpha \cdot (t - t_0)) \cdot (1 + \lambda \cdot \rho))$

Veličina	Hodnota	u _{abs}	8.000	19.84	Citlivosť	u _{Aef,rel}
etalon	9.8E-6	176.7E-12	18.0E-6	norm	1	18E-6
u _A	9.8E-6	18.5E-12	1.9E-6	norm	1	2E-6
g	9.80873	980.9E-9	100E-9	norm	1	100E-9
α	10.0E-6	1.0E-6	0.100	norm	14.8E-6	1E-6
t	21.48	0.5	0.023	norm	14.8E-6	345E-9
λ	1.20E-12	120.0E-15	0.100	norm	64.2E-6	6E-6
m	1027.71	157.9E-6	153.6E-9	norm	1	154E-9
u _{Aef,celk}						



Miesto: 215
 Meral: **Kopkás**
 Kontroloval: **Chytil**



19E-6 | 0.0019 | 0.0013 | 0.0019 | 1.84E-10